



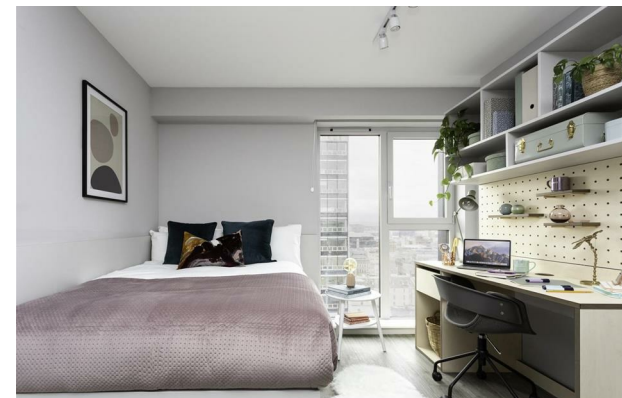
Cathedral Street | | Glasgow | G1 2BQ

£285 Per week



Cathedral Street |
Glasgow | G1 2BQ
£285 Per week

BRIDLE WORKS | STUDENT | SEPTEMBER |



- Karaoke Room
- Private Dining
- Cinema Room
- Communal Lounge
- Bike Storage
- Gym
- Rooftop Terrace
- Study Area
- Communal TV
- Games Area

| Energy Efficiency Rating | | Current | Potential |
|--|--|----------------------------|-----------|
| <i>Very energy efficient - lower running costs</i> | | | |
| (92 plus) A | | | |
| (81-91) B | | | |
| (69-80) C | | | |
| (55-68) D | | | |
| (39-54) E | | | |
| (21-38) F | | | |
| (1-20) G | | | |
| <i>Not energy efficient - higher running costs</i> | | | |
| Scotland | | EU Directive 2002/91/EC | |

Lower Ground Floor
27 Ridley Place
Newcastle upon Tyne
Tyne and Wear
NE1 8JN
0191 6403450
info@propertybynest.co.uk